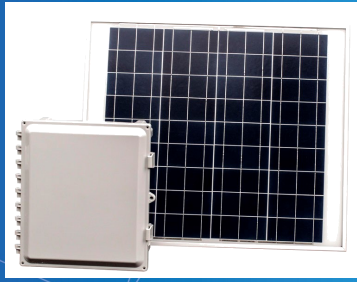




# 36 AMP HOUR 14X12X6 SOLAR SOLUTION WITH 60 W SOLAR PANEL



The AccelTex Solutions Solar Solutions are a complete remote power solution designed for off-grid operation to power various electronics. These solar solutions are fully configured and provide multiple output power options, such as PoE and DC power.

Part Number: ATS-SOLR-36AH-60W-14126P



## FEATURES

- Fully integrated unit includes charge controller, batteries, enclosure and solar panel(s)
- Multiple output power options, including PoE (802.3af & 802.3at) & 12V DC
- Multiple PoE outputs with an additional PoE Switch for powering multiple PoE devices, such as security cameras
- Batteries are continuously charged via the solar panels
- Charge controller protects against over-charging and over discharging of the batteries
- Enclosure ships with a Wall mount (Pole Mount is available as an accessory item) and Solar panel ships with a pole mount
- Outdoor-Rated



## BENEFITS

- Self-Contained Unit for easy install
- Provides isolated and uninterrupted power
- Space for mounting electronics (on some models)



## ADDITIONAL COMPATIBLE ACCESSORY ITEMS

- PoE Switch (ATS-POES-12VDC-56VDC)
- Enclosure Pole Mount (ATS-PMK-12)



## APPLICATIONS

- Security Cameras
- Outdoor Wi-Fi
- Parking Lots and Garages
- Cellular Backhaul
- Remote Monitoring and Control
- Remote Sites
- Temporary Locations
- Disaster Relief

# 36 AMP HOUR 14X12X6 SOLAR SOLUTION WITH 60 W SOLAR PANEL

Part Number: ATS-SOLR-36AH-60W-14126P



## MECHANICAL SPECIFICATIONS

Enclosure Weight: 33.5 lbs (15.2 kg)  
Solar Panel Weight: 12.45 lbs (5.65 kg)  
Total System Weight: 58.65 lbs (26.6 kg)  
Enclosure Dimensions: 14" H x 12" W x 6" D (355.6 mm H x 304.8 mm W x 152.4 mm D)  
Solar Panel Dimensions: 30.12" L x 25.87" H x 1.38" D (765 mm L x 657 mm H x 35 mm D)  
Solar Panel Pole Mount Diameter: Up to 2" Diameter Pole (50.8 mm)  
Color: Light Grey  
Material: Polycarbonate  
Door Type: Solid  
Lock Type: Latch with Padlockable Hasp  
Enclosure Installation: Mounting Feet



## ELECTRICAL SPECIFICATIONS

System Output Power Options: 1 Output for 802.3af or 802.3at and 1 Output for 12V DC (Supports up to 10 Amps)  
Solar Panel Input: 60W  
Solar Panel Optimum Operating Current: 3.1 Amps  
Charge Controller Max Input: 10 Amps



## ENVIRONMENTAL SPECIFICATIONS

Installation Environment: Outdoor (NEMA 6P, 4X, 4, 3R, 122; IP68 )  
Operating Temperature: -4 to 122°F (-20 to 50°C)



## SYSTEM COMPONENTS

- (4) 12V 9 Ah AGM Sealed Lead Acid Batteries
- 14x12x6 Polycarbonate Enclosure with Solid Door, Latch Locks, Pad Lockable Hasp and Wall Mount
- 60 W Monocrystalline Solar Panel with Pole Mount
- Charge Controller (802.3af/at PoE and 12V DC, 10 Amp Output Power)
- (1) 15 cm and (1) 20 cm DIN Rail, (2) DIN Rail Mounts, (2) Universal DIN Rail Mounting Plates for equipment that is not DIN Rail Mount Ready and fasteners for equipment mounting
- (10) Battery Wiring Harnesses; (2) to controller and (8) to link batteries
- (1) PG16 and (1) PG7 Cord Grip
- (1) 95 cm Battery Safety Strap
- (1) Cable Management Supplies Kit (includes Zip Ties and Zip Tie Mounting Pads)

# 36 AMP HOUR 14X12X6 SOLAR SOLUTION WITH 60 W SOLAR PANEL

Part Number: ATS-SOLR-36AH-60W-14126P



## RECOMMENDED SYTSTEM USAGE SCENARIOS

Watts Consumed	Total Hours of Backup**	Solar Solution Sizing*			
		12 Hour Run Time		24 Hour Run Time	
		3 Hours Peak Sunlight	6 Hours Peak Sunlight	3 Hours Peak Sunlight	6 Hours Peak Sunlight
2	108	✓	✓	✓	✓
4	54	✓	✓	✓	✓
6	36	✓	✓	✗	✓
8	27	✓	✓	✗	✓
10	22	✗	✓	✗	✗
12	18	✗	✓	✗	✗
14	15	✗	✓	✗	✗
16	14	✗	✓	✗	✗
18	12	✗	✓	✗	✗
20	11	✗	✗	✗	✗

\*For all scenarios, batteries have been de-rated 50% for cold weather and recovery for non-sunny days.

\*\*Assumptions: Batteries are fully charged and panel does not provide power (running off stored battery power only). Batteries have been derated 50% for cold weather.